

# Retail Anti-Theft Camera Display Stand

This anti-theft display stand is designed to securely showcase cameras and other valuable electronics in retail environments. It features a robust construction with a security cable to prevent theft.



## ADDITIONAL IMAGES

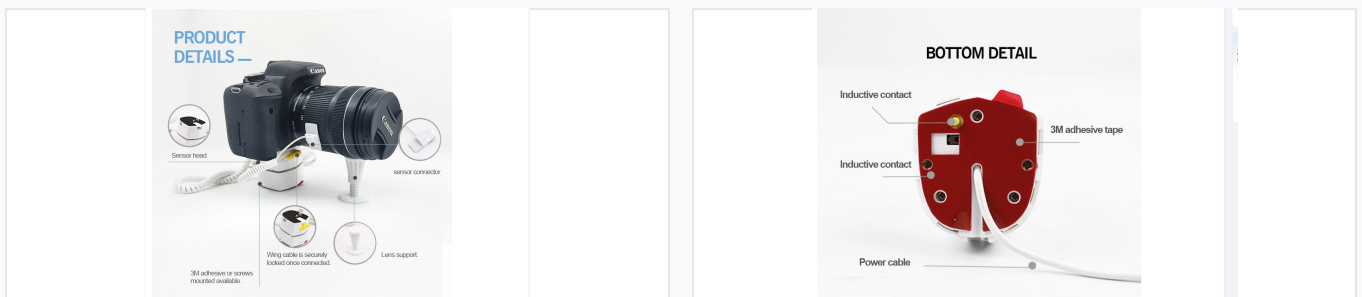


## Product Overview

### Professional Camera Security Solution

This advanced anti-theft display stand is specifically engineered to secure high-value cameras in retail environments. Featuring a robust design with integrated alarm functionality, it ensures that devices remain safe from theft while allowing customers to freely handle and test products. The system is designed for easy installation and includes a stretchable cable to maximize user experience and product visibility.

## Technical Specifications

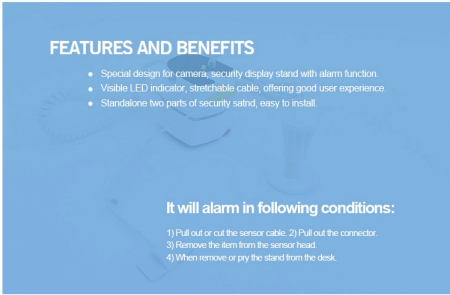


Includes lens support for stability and versatile mounting options via adhesive or screws.

Detailed view of mounting base including inductive contacts, power connection, and high-strength adhesive.

<b>Model Number</b>	DSP5012
<b>Dimensions</b>	55 x 50 x 55 mm
<b>Material</b>	High quality ABS
<b>Color</b>	White

## Security Features



**FEATURES AND BENEFITS**

- Special design for camera, security display stand with alarm function.
- Visible LED indicator, stretchable cable, offering good user experience
- Standalone two parts of security stand, easy to install.

**It will alarm in following conditions:**

- 1) Pull out or cut the sensor cable. 2) Pull out the connector.
- 3) Remove the arm from the sensor head.
- 4) When remove or pry the stand from the desk.

Integrated LED indicator and comprehensive alarm system triggered by tampering or removal.

### Alarm Triggers

- Sensor cable cut or pulled
- Connector pulled out
- Device removed from sensor head
- Stand pried or removed from desk

### Certifications

CE

## Logistics

### Packaging Details

Item	Specification
Quantity per Carton	80pcs
Gross Weight per Carton	17.0kg
Carton Dimensions	75x33x29cm