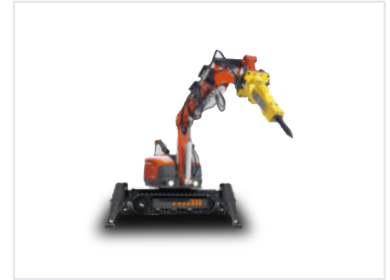


# Remote Controlled Demolition Robot with Hydraulic Breaker

This remote-controlled machine is engineered for precision demolition and construction tasks. It features a hydraulic breaker attachment for efficient concrete breaking and material processing.



## Overview

### High-Performance Demolition Robot

This remote-controlled demolition robot is engineered for precision and efficiency in challenging construction environments. Featuring a versatile hydraulic breaker attachment and a quick-change system for multiple tool heads, it allows for rapid adaptation to various job requirements. With a total weight of 3.5 tons or less, it offers exceptional mobility and stability, making it an ideal solution for urban demolition, renovation projects, and tasks in confined spaces.

## Technical Specifications

Total Weight	3.5 t
Weight Constraint	Less than or equal to 3.5 tons

## Operational Features

### Primary Attachment

Hydraulic Breaker

### Mobility Highlights

- Compact design for confined spaces
- High flexibility
- Mobile tracked chassis

Tool Change System	Quick change system for multiple tool heads
Control Method	Remote controlled