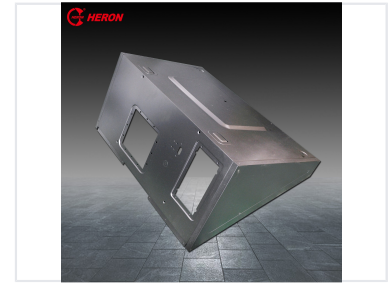


# Range Hood Capacitor Discharge Welder with Two Heads

This capacitor discharge welder is designed for range hood manufacturing. Featuring a two-head configuration, it allows for simultaneous welding, increasing production efficiency.



## ADDITIONAL IMAGES



## Product Overview

### High-Efficiency Welding Solution

This 30KJ Capacitor Discharge (CD) welder is precision-engineered specifically for the household appliance industry, particularly for range hood manufacturing. Featuring a dual-head configuration, it enables simultaneous welding operations to significantly enhance production throughput. The system is designed for robust performance, offering precise energy delivery, modular maintenance, and integrated safety features like overload protection and emergency stops.

## Technical Specifications

### Rated Capacity

**30 KJ**

Total Capacity

**15 KJ**

Per Head Capacity

Max Primary Current	106 A
Max Short Circuit Current	60.6 KA
Max Working Pressure	7.2 KN
Power Supply	380V/3/50Hz

## Physical Dimensions

Dimensions (LxWxH)	3056 x 2122 x 1828 mm
--------------------	-----------------------

## Features

### Key Features

- Two-head configuration for simultaneous welding
- Optimized for range hood construction
- Robust control system for precise energy delivery
- Modular design for easy maintenance
- Integrated overload protection
- Emergency stop mechanisms

### Industry Application

Household Appliances, Range Hood Manufacturing, Industrial Assembly