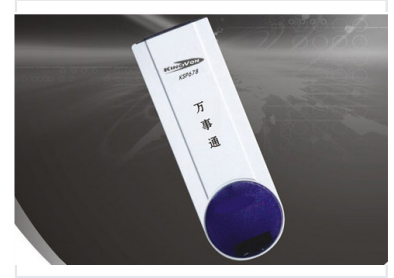


# Radio and TV Broadcasting Device

This is a radio and TV broadcasting device. It is designed for transmitting audio and video signals.



## Product Overview

### Professional Broadcasting Solution

This versatile device is designed for professional radio and television broadcasting applications. It features a streamlined design with an intuitive user interface, ensuring reliable performance in demanding media environments. The unit serves as a critical component for signal transmission, supporting high-standard output requirements for modern broadcast infrastructures.

## Technical Specifications

Model Number	KSP678
Primary Function	Radio Broadcasting, TV Broadcasting

## Design and Interface

User Control	Circular activation button
Form Factor	Rectangular desktop unit