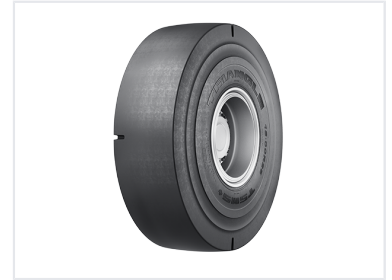


Radial Loader Tire for Severe Conditions

This radial loader tire is engineered for severe operating conditions. Its extra deep tread depth offers maximum wear and a smooth design that eliminates tearing, delivering a smooth ride and ensuring longer wear.



Product Overview

Severe Duty Radial Loader Tire

This radial loader tire is engineered specifically for the most demanding off-the-road environments, including mining and heavy-duty construction. Featuring a smooth, super extra deep tread design, it maximizes wear life and puncture resistance while eliminating tearing for a smoother operation. The advanced radial construction promotes cool running and superior load-bearing capabilities, significantly reducing operational downtime and improving overall equipment productivity.

Technical Specifications

Tread Class

L5S

Tire Size

18.00R25

Performance Features

TSMS+ L5S



Smooth Super Extra Tread Radial Loader Tire for Severe Operating Conditions

- Super extra deep tread depth offers maximum wear
- Smooth tread design eliminates tearing, delivers smooth ride and longer wear
- Unique compound for long tread life and advanced cut resistance
- Radial construction improves treadwear and cool running

Engineered for extreme longevity with super extra deep tread and specialized cut-resistant compounds.

Performance Benefits

- Super extra deep tread depth for maximum wear
- Smooth tread design to prevent tearing
- Advanced cut resistance compound
- Cool-running radial construction

Application Suitability

Industries

Mining, Construction, Industrial