

PVC Duct Tube for Air Conditioner Line Sets

This PVC duct tube is designed for air conditioner HVAC line set cover kits. It provides protection and concealment for AC pipes, ensuring a clean and professional installation.



ADDITIONAL IMAGES



Product Overview



A complete range of PVC ducting components for a professional HVAC installation finish.

Professional HVAC Line Set Protection

This PVC duct tube system is designed to provide a clean, professional finish for mini-split air conditioning installations by concealing and protecting refrigerant lines, drain pipes, and communication cables. Constructed from high-quality, anti-aging PVC, the kits offer excellent resistance to UV radiation and weather elements, ensuring long-lasting performance in both indoor and outdoor environments. The modular design features components that can be separated in the middle, allowing for quick and easy installation over existing line sets.

Key Features

- High-quality weather-resistant PVC material
- Anti-aging properties for long-term outdoor durability
- Easy-install design with separable components
- Comprehensive protection for pipes and wiring
- Aesthetically pleasing concealment for HVAC line sets

Technical Specifications

Straight Duct Models

Model	Width (A) mm	Depth (B) mm	Length (C) m
GG-80-11	77	64	2
GG-100-III	103	68	2
GG-130-IV	130	90	2
GG-150-V	150	90	2

Material Properties

Anti-Aging PVC, UV Resistant, Weatherproof, Corrosion Resistant, Impact Resistant

Components & Fittings



Modular fittings including elbows, joints, and caps for versatile routing configurations.

Available System Components

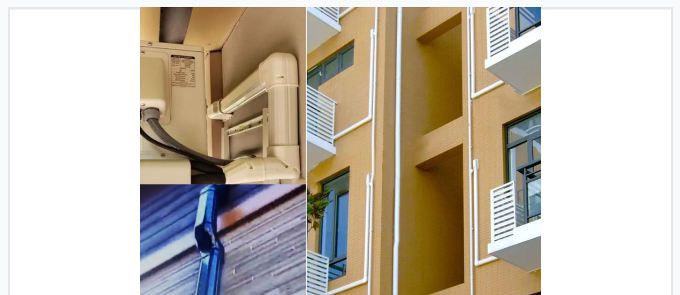
- Straight Duct
- 90° Plane Bending (Flat Elbow)
- 90° Vertical Bending
- Wall Cover / Wall Cap
- End Cover / End Cap
- Coupling / Cover Joint
- Flexible Duct / Free Joint
- Ceiling Cap
- PVC Base Bracket

Application

WIDELY APPLICATION



The UV-resistant PVC material is suitable for both indoor aesthetic concealment and outdoor protection.



Protects refrigerant lines from physical damage and environmental exposure.

Installation Environment

Indoor • Outdoor • Residential • Commercial

Compatible Systems

Mini-split AC units, HVAC line sets, and central air conditioning pipe routing.