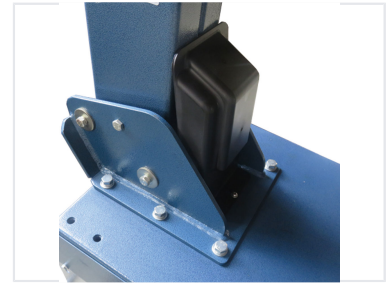


Professional Tire Changer Machine

This professional-grade tire changer is designed for efficient and safe tire removal and installation. It features adjustable clamps to accommodate a wide range of tire sizes and includes a bead breaker for easy tire separation from the rim.



ADDITIONAL IMAGES



Overview

Professional Tire Changer

This professional-grade tire changer is engineered for the efficient and safe maintenance of standard, low-profile, and run-flat tires. Designed for automotive service centers and tire shops, the machine features a robust construction and a powerful motor to ensure reliable operation. With its pneumatic tilting back post and versatile clamping capabilities, it provides a comprehensive solution for car and light commercial vehicle tire servicing.

Technical Specifications

Key Performance Metrics

1.1 kw

Motor Power

70 dB(A)

Noise Level

10 Bar

Max Air Supply

Wheel Capacity

Feature	Capacity
Inside Clamping	14"-28"
Locking Rim	10"-28"
Max Wheel Diameter	50"
Max Wheel Width	18"

Physical Dimensions

Weight Specs

- Gross Weight: 370 KG
- Net Weight: 340 KG

Overall Dimensions

1150x900x990mm

Features

Power Supply Options

110V • 220V • 380V

Key Features

Pneumatic tilting back post, Pneumatic bead breaker, Run-flat tire compatible, Low-profile tire compatible, Reinforced post structure