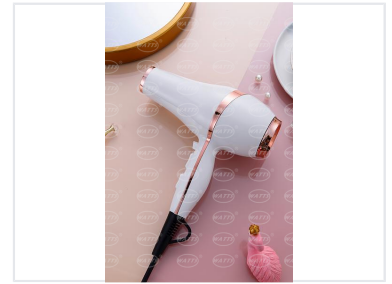


# Professional Ionic Hair Dryer

This professional hair dryer features multiple heat and speed settings for customized styling. Advanced ionic technology reduces frizz and enhances shine, leaving hair smooth and healthy.



## ADDITIONAL IMAGES



## Overview

### Professional Performance Hair Dryer

This professional-grade hair dryer combines powerful 2000-2200W performance with advanced ionic and ceramic technology to deliver salon-quality results. Designed for efficiency and versatility, it features multiple heat and speed settings alongside a cool shot function to cater to diverse styling needs. With its ergonomic build, low-noise operation, and included styling attachments, this unit is an essential tool for professional styling environments.

## Technical Specifications

### Power Output

**2200 W**  
Max Power

### Performance Settings

Feature	Count
Heat Settings	3
Speed Settings	2

### Motor Type

A.C Motor, D.C Motor

## Features & Technology

### Integrated Technologies

Tourmaline Ionic • Ceramic Radiation • Keratin Infusion

### Included Attachments

- Professional concentrator (2 styles)
- Diffuser

### Usability Features

- Freeze shot button
- Low noise operation
- High wind speed
- Removable filter