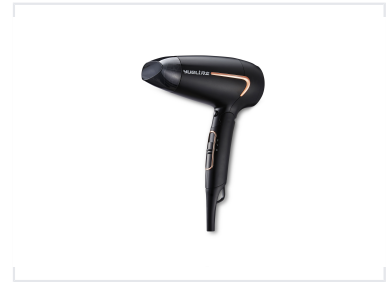


Professional Hair Dryer with Multiple Settings

This professional hair dryer is designed for fast and efficient hair drying. It features multiple heat and speed settings to customize the drying experience.



Product Overview

Professional Performance Hair Dryer

This professional-grade hair dryer is engineered for fast and efficient drying while minimizing heat damage. Featuring a lightweight, foldable design, it offers a versatile styling experience with multiple speed and heat settings. Equipped with ionic technology and a cool shot function, it helps promote healthy, shiny hair, making it a reliable tool for both salon professionals and home users.

Technical Specifications

Power & Voltage

120 V

Voltage Low

240 V

Voltage High

1600 W

Max Power

Motor Type

DC Motor

Features

Design & Convenience

- Foldable handle for portability
- Removable filter cover for easy cleaning
- Includes concentrator nozzle

Settings & Functions

Ionic Function, Cool Shot, 0-1-2 Speed/Heat Settings