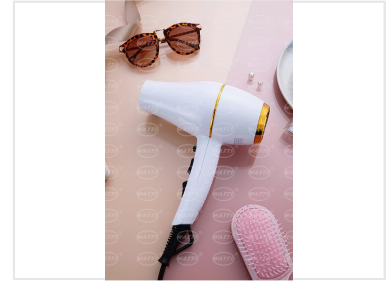


# Professional Hair Dryer with Concentrator Nozzle

This professional hair dryer offers multiple speed and heat settings for versatile styling. It is equipped with a concentrator nozzle for focused airflow and a cool shot button to set styles.



## ADDITIONAL IMAGES



## Product Overview

### Professional Performance Hair Dryer

This professional-grade A.C. hair dryer is engineered for high-performance styling, delivering a powerful 2000W output for rapid drying. Featuring advanced technologies like Tourmaline Ionic, Ceramic Radiation, and Keratin compatibility, it ensures a smooth, frizz-free finish while protecting hair health. Designed for versatility and ease of use, it includes multiple heat and speed settings, a cool shot function, and a removable filter for easy maintenance.

## Technical Specifications

### Power Output

**2000 W**  
Power

Motor Type	Professional A.C. Motor
Noise Level	Low noise operation

## Styling Features

Heat Settings	3
Speed Settings	2
Hair Care Technologies	Tourmaline Ionic, Ceramic Radiation, Keratin Compatible

## Accessories & Maintenance

### Included Attachments

- Concentrator Nozzle (Style 1)
- Concentrator Nozzle (Style 2)
- Diffuser

### Filter Type

Removable filter