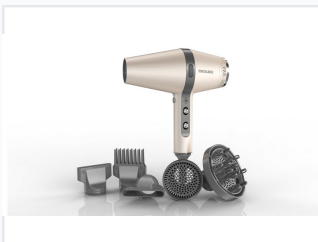


# Professional Hair Dryer with Attachments

This professional hair dryer includes multiple attachments for versatile styling. It features adjustable heat and speed settings, along with a cool shot button to set styles.



## ADDITIONAL IMAGES



## Product Overview

### Professional Styling Performance

This professional hair dryer is engineered for versatile styling in both salon and home environments. Featuring an ergonomic design with intuitive controls, it offers multiple heat and speed settings to accommodate all hair types. The unit comes equipped with specialized attachments, including a concentrator nozzle, diffuser, and styling comb, ensuring precise results and reliable, long-lasting performance.

## Technical Specifications

### Key Performance Metrics

**3 levels**  
Heat Settings

**2 levels**  
Speed Settings

### Safety Features

Overheat protection, Cool shot button

## Included Accessories

### Included Attachments

- Concentrator nozzle for focused airflow
- Diffuser for enhancing curls and reducing frizz
- Styling comb for precise shaping

## Usage & Design

### Ideal For

Salon use • Home use • All hair types