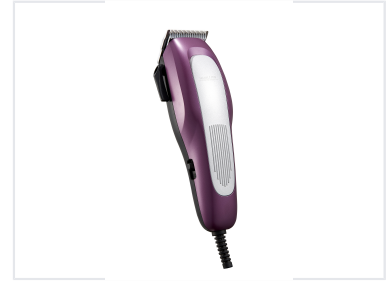


# Professional Hair Clipper with Comb Attachments

This professional-grade hair clipper is designed for efficient and precise hair cutting. High-quality blades ensure smooth operation and consistent results.



## Product Overview

### Professional Hair Clipper

This professional-grade hair clipper is engineered for efficient and precise grooming. Featuring high-quality stainless steel blades with a protective Cr coating, it ensures smooth operation and consistent cutting results. The ergonomic design provides comfortable handling, making it an ideal choice for both professional barbers and home users seeking reliability.

## Technical Specifications

### Power Consumption

**10 W**

Power Rating

Rated Voltage	220-240V~
Rated Frequency	50 Hz
Power Cord Details	1.8m, H03WH2-F 2x0.5mm <sup>2</sup>

## Blade & Cutting

Blade Material	Stainless steel with Cr coating
Blade Thickness Options	2mm, 4mm
Adjustable Lever	Yes

## Accessories

### Included Comb Attachments

- 3mm
- 6mm
- 9mm
- 13mm
- Left ear comb
- Right ear comb