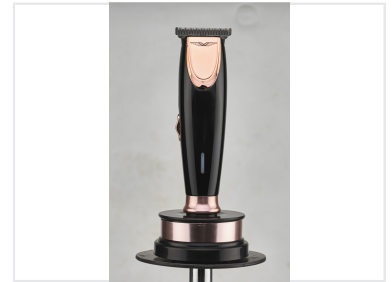
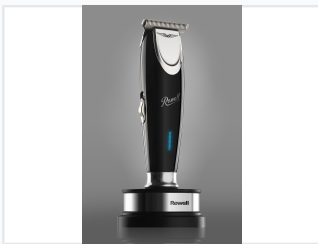


# Professional Hair Clipper with Charging Stand

This professional hair clipper features precision blades that ensure clean and accurate cuts. It is equipped with a high-performance motor for efficient operation and has a sleek, ergonomic design for comfortable handling.



## ADDITIONAL IMAGES



## Product Overview

### Professional Performance and Reliability

This professional-grade hair clipper is engineered for precision and efficiency, featuring a high-density titanium alloy steel blade for long-lasting sharpness. Designed for versatility, it offers both corded and cordless operation modes to suit any workspace. With a rapid 1.5-hour charging cycle and an ergonomic build, it is an ideal tool for both barbershops and home grooming needs.

## Power & Battery

### Battery Capacity

**600 mAh**

Capacity

Charging Time

1.5 hours

Usage Time

1 hours

## Design & Build

### Operation Modes

Corded • Cordless

### Included Accessories

- Charging Stand
- Hair Clipper Unit

Blade Material

Stainless Steel, Titanium Alloy