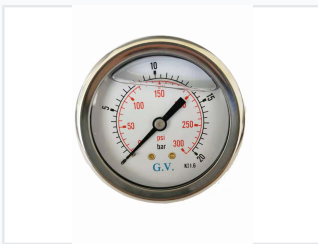


# Pressure Gauge Manometer

This pressure gauge is designed to measure pressure in both psi and bar units. The gauge features a circular dial with clear markings, housed in a robust metal casing, making it suitable for various industrial and commercial applications.



## ADDITIONAL IMAGES



## Overview

### Precision Pressure Monitoring

This robust manometer pressure gauge is engineered for accurate pressure measurement across a wide range of industrial and laboratory applications. Featuring a durable metal housing and a reliable threaded brass connector, it ensures long-lasting performance in demanding environments. The clear, dual-scale dial allows for convenient and precise monitoring in both psi and bar units.

## Technical Specifications

Pressure Range (PSI)	300 psi
Accuracy Class	1.6
Measurement Units	psi, bar

## Construction

### Design Features

- Robust metal housing
- Threaded connector
- Dual-scale circular dial

Casing Material	Metal
Connector Material	Brass

## Applications

### Typical Applications

Industrial • Laboratory • Commercial