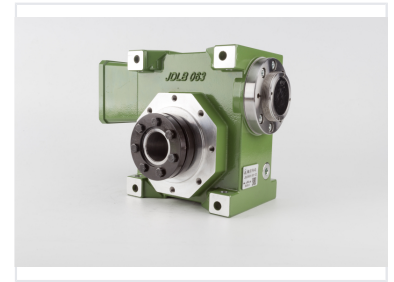
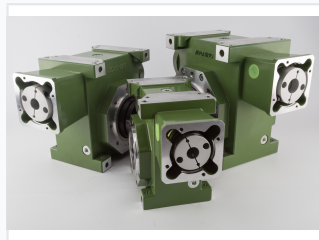
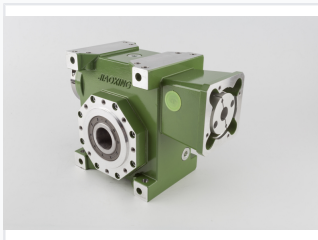


Precision Worm Gear Reducer

These high-precision worm gear reducers are designed for demanding industrial use. The units provide exceptional torque transmission and smooth operation for automation and robotics applications.



ADDITIONAL IMAGES



Product Overview

High Precision Worm Gear Reducer

The JDLB series high precision worm gear reducer is engineered as an ideal, cost-effective substitute for precision planetary gearboxes. Designed for demanding industrial applications, these units feature robust construction and precise gear meshing to ensure exceptional torque transmission. With a modular design that supports flexible mounting, these gearboxes are perfectly suited for integration into automation systems, robotics, and high-performance machinery.

Technical Specifications

Key Performance Features

- Minimal backlash for high precision
- Robust housing construction
- Precision-engineered worm and wheel gearing
- High-quality bearings for extended service life
- Flexible mounting options

Suitable Applications

Automation Systems • Robotics • Machine Tools • Motion Control Systems

Specific Model Identifiers

Model Code	Configuration
JDLB 063	JDLB63-30-C2
JDLB 075	Standard

Available Series Models

JDLB 063, JDLB 075