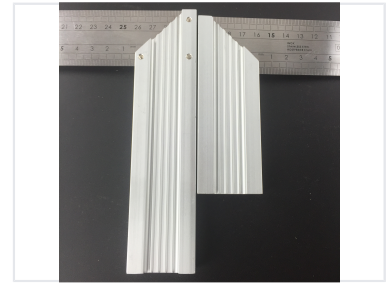
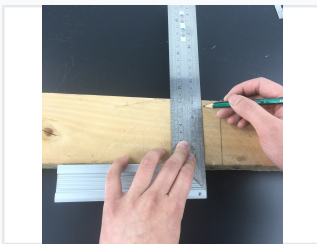


# Precision Square with Aluminum Handle and Stainless Steel Blade

This precision square features an aluminum handle securely attached to a stainless steel blade. Engraved metric graduations on the blade facilitate accurate measurements for woodworking, metalworking, and general layout tasks.



## ADDITIONAL IMAGES



## Product Overview

### Precision Layout Tool

This precision square features a durable aluminum handle and a high-quality stainless steel blade, designed for accurate layout and measurement tasks. The blade includes etched metric and inch graduations for versatile reading in both woodworking and metalworking applications. Its robust construction ensures long-term reliability and resistance to corrosion in demanding workshop environments.

## Technical Specifications

Blade Material	Stainless Steel
Handle Material	Aluminum
Finish	Etched Polish
Measurement Systems	Metric, Inch
Packaging	PP Bag

## Dimensions

### Available Sizes

Blade Length	Handle Length
200	115
250	140
300	165
400	200

## Logistics

Carton Dimensions	66 x 29 x 19 cm
-------------------	-----------------