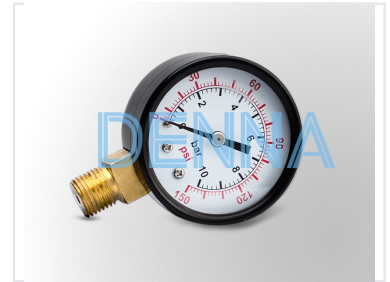


Precision Pressure Gauge with Dual Scale

This precision pressure gauge accurately measures pressure in various applications. It features a clear dial and is calibrated in both MPa and psi for versatile measurement.



ADDITIONAL IMAGES



Product Overview

Precision Pressure Gauge

This precision pressure gauge is engineered for the accurate monitoring of fluid and gas pressures across industrial, laboratory, and general applications. Featuring a robust construction and a clear, easy-to-read dial, it ensures reliable performance in demanding environments. The dual-scale design provides versatile measurement capabilities, allowing for quick readings in both MPa/psi and bar/psi configurations.

Technical Specifications

Suitable For

- Industrial systems
- Laboratory equipment
- General pressure monitoring

Measurement Units

MPa, psi, bar

Connection

Threaded connection

Performance Metrics

Key Pressure Indicators

2.5 MPa

Max Pressure (MPa)

10 bar

Max Pressure (bar)