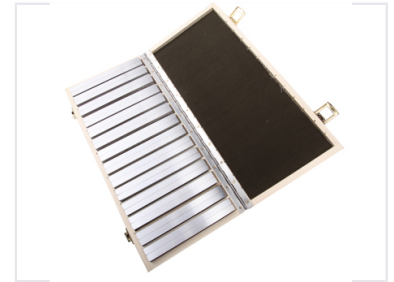
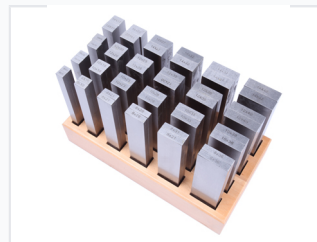
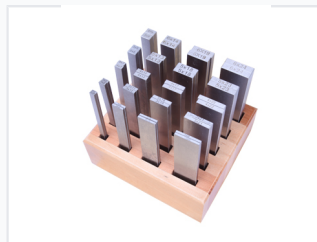


# Precision Parallel Set

Precision parallel sets are made from high-grade alloy steel, hardened to HRC56-62 and finely ground in pairs. The longitudinal surfaces are flat and parallel, machined with precise dimensions to guarantee high accuracy and stability over long periods.



## ADDITIONAL IMAGES



## Product Overview

### Precision Performance

These precision parallel sets are manufactured from high-grade alloy steel, engineered to maintain consistent stability and accuracy over extended use. Each pair is finely ground to ensure exceptional parallelism and tight height tolerances, preventing distortion in demanding machining environments. They serve as essential tools for toolmakers and machinists requiring reliable, stable support for workpieces during milling, grinding, and inspection tasks.

## Technical Specifications

### Hardness Range

**56 HRC**  
Minimum HRC

**62 HRC**  
Maximum HRC

### Construction Material

High grade alloy steel

### Key Accuracy Standards

Parallelism Guaranteed, Fine Ground Finish, Precision Height Tolerance

## Storage and Presentation

### Protective Features

- Organized wooden block holder
- Fitted interior to maintain dimensional integrity
- Dark internal lining for corrosion protection

### Included Storage

Fitted wooden case with secure metal clasps