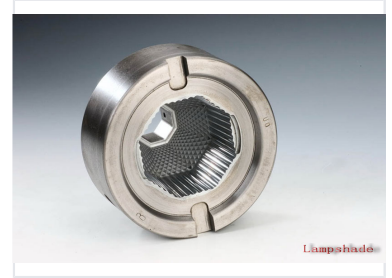


Precision Machined Metal Component with Hexagonal Socket

This precision-machined metal component is part of a larger assembly. It features a cylindrical outer shape with a complex internal geometry, including a hexagonal socket.



Product Overview

Precision Engineering

This precision-machined metal component is designed for demanding industrial applications requiring high tolerance and structural integrity. Featuring a robust cylindrical exterior with integrated grooves, it is engineered for secure assembly and reliable torque transmission. The internal hexagonal socket ensures compatibility with standard fastening tools, making it an ideal choice for complex mechanical assemblies.

Technical Specifications

Identification Markings

- 00
- 8
- Lampshade

Material Type

Machined Metal • Steel/Aluminum

Component Type

Precision Machined Component

Internal Geometry

Hexagonal Socket

Surface Features

Textured Interior, External Grooves, Metallic Finish