

Precision Injection Mold

This precision injection mold is designed for manufacturing plastic components. It ensures consistent quality and tight tolerances in high-volume production runs.



Overview

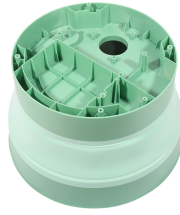


Example of high-precision parts produced using our injection molding solutions.

Precision Injection Mold Solutions

This precision-engineered injection mold is designed to deliver high-quality plastic components across various industries, including automotive, communications, and consumer electronics. Built with robust materials and compatible with a wide range of thermoplastic resins, it ensures dimensional accuracy and consistent performance for high-volume production. The mold supports flexible configurations, including single or multiple cavities and various runner systems, tailored to meet specific manufacturing requirements.

Technical Specifications



Precision-engineered mold construction designed for durability and dimensional accuracy.

Runner System Compatibility

- Cold Runner
- Hot Runner (YUDO, HRS, Moldmaster, HUSKY, DME, Local Brand)

Mould Base Materials

- P20
- 45#
- 4CR13

Mould Life Expectancy

2 Million

Maximum Shots

Compatible Design Software

UG, Pro-E, AutoCAD, CATIA

Injection Tonnage Capacity

50-3600T

Material Compatibility

Compatible Plastic Materials

- PS
- ABS
- PP
- PVC
- PMMA
- PBT
- PC
- POM
- PA66
- PA6
- PBT+GF
- PC/ABS
- PEEK
- HDPE
- TPU
- PET
- PPO

Production Details

Applicable Industries

Automotive • Communications • Electronics • Home Appliances • Household Products

T1 Lead Time

40 days