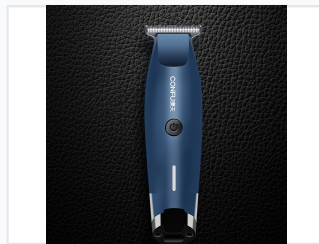
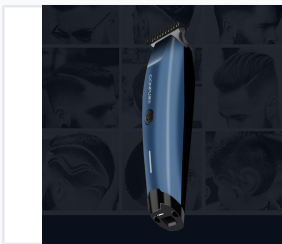


# Precision Hair Clipper with Rechargeable Battery

This precision hair clipper is designed for grooming and trimming hair. It features a durable cutting blade, ergonomic handle, and a rechargeable battery for cordless operation.



## ADDITIONAL IMAGES



## Overview

### Professional Precision Grooming

This precision hair clipper is engineered for both professional salon environments and high-quality home grooming. Featuring a durable, high-performance cutting blade and a powerful motor, it ensures clean, even cuts with every pass. The ergonomic design provides superior control and comfort during extended use, while the integrated rechargeable battery offers the convenience of cordless operation.

## Performance & Power

### Charging Options

- Charging Dock
- USB Charging Cable

### Operation Type

Cordless

### Power Source

Rechargeable Battery

## Design & Build

### Design Features

Ergonomic Handle, Precision Blade, Built-in Power Button

## Usage

### Intended Use

- Professional Salon Use
- Home Grooming