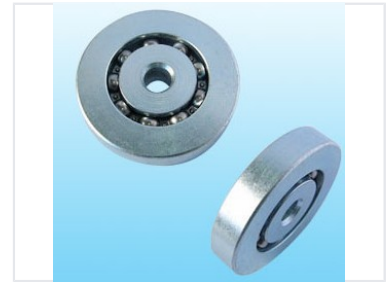


Precision Ball Bearing Assembly

Precision ball bearing assembly designed for machinery and industrial applications. Features a robust metal construction with multiple ball bearings for smooth and efficient rotational movement.



Product Overview

High-Precision Industrial Bearing

This precision ball bearing assembly is engineered for demanding industrial machinery and mechanical applications. Constructed with robust metal materials, it is designed to facilitate smooth, efficient rotational movement while maintaining low friction. Its high load capacity makes it an ideal component for critical machinery assemblies requiring durability and reliable performance.

Technical Specifications

Construction Material	Robust Metal
Suitable Applications	Industrial Machinery, Mechanical Components, High Load Systems

Performance Features

Key Performance Indicators

1 Low

Friction Level

1 High

Load Capacity