

Portable Mesh Nebulizer for Respiratory Therapy

This portable mesh nebulizer utilizes advanced technology to convert liquid medication into a fine mist for inhalation. It is powered by AA batteries or DC power, and includes masks for both adults and children.

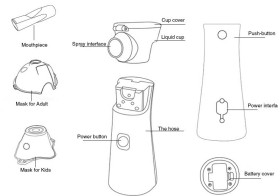


ADDITIONAL IMAGES



Product Overview

Product parts introduction



Product parts introduction, including masks, mouthpiece, and main unit components.

Portable Respiratory Therapy Solution

This portable mesh nebulizer utilizes advanced technology to convert liquid medication into a fine mist for efficient inhalation. Designed for both adults and children, it offers a quiet operation and compact form factor suitable for home use or travel. The device features food-grade materials, dual power options, and an automatic shut-off function to ensure safety and ease of use.

Technical Specifications



Detailed technical parameters including weight, dimensions, and atomization rate.

Physical Dimensions & Weight

Attribute	Value
Weight (without battery)	~110g
Dimensions	50mm x 48mm x 130mm

Performance Metrics

0.2 mL/min
Atomization Rate

3.7 μm
Particle Size

113 kHz
Nominal Frequency

Performance & Features



Quiet operation design with less than 50dB noise level and 8mL cup capacity.

Operating Characteristics

- Noise Level: d 50dB(A)
- Cup Capacity: Up to 8mL
- Operation Mode: Continuous
- Automatic shut-off when medicine is empty

Power Options

2 x AA Batteries, DC Power

Clinical Application



Suitable for assisting in the treatment of respiratory conditions like coughs, colds, and bronchitis.

Common Applications

Cough • Cold • Sore Throat • Bronchitis • Asthma • Rhinitis

Package Contents

What's in the Box

- Nebulizer machine
- Adult mask
- Kids mask
- Mouthpiece
- Storage bag
- DC cable
- Lanyard
- Warranty card
- English Manual