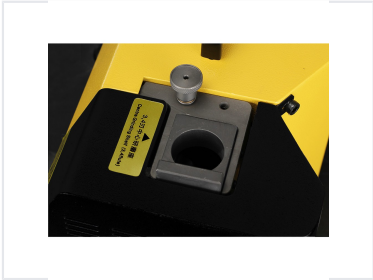


# Portable End Mill Sharpener 4-14mm

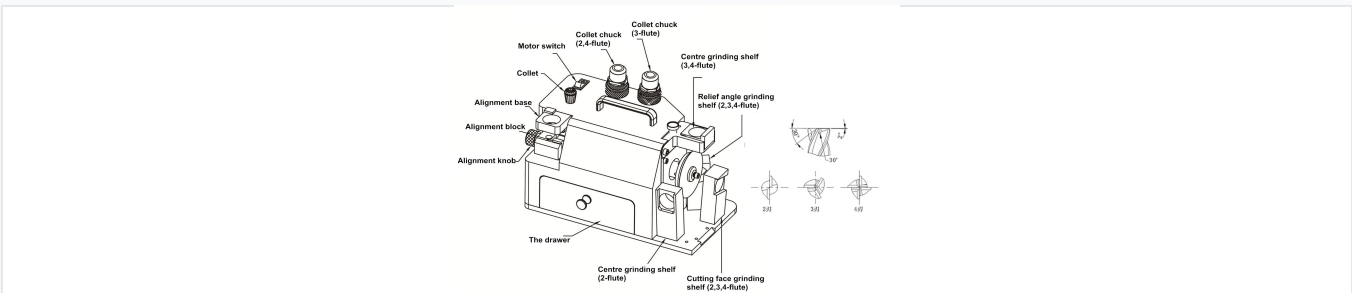
This portable end mill sharpener is designed for 2, 3, and 4-flute end mills. Grinding is accurate, rapid, and easy, requiring no special skills.



## ADDITIONAL IMAGES



## Product Overview



Detailed view of the grinder controls including collet chucks, alignment knobs, and various grinding shelves for 2, 3, and 4-flute tools.

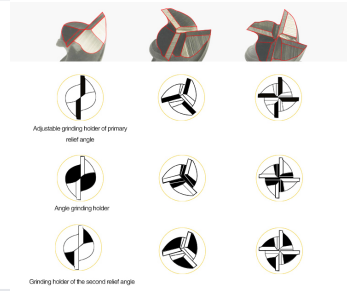
### High-Precision Portable End Mill Sharpener

This portable end mill sharpener is designed for rapid and accurate grinding of 2-flute, 3-flute, and 4-flute end mills. It provides an easy-to-operate solution that requires minimal skill, ensuring consistent results for tool maintenance. Equipped with a durable diamond grinding wheel, it offers long service life and high precision, making it an essential tool for maintaining cutting performance in professional workshops.

## Technical Specifications



The relief angle grinding shelf allows for precise angle adjustments for 2, 3, and 4-flute end mills.



Visual representation of the adjustable grinding holders for primary and secondary relief angles.

### Operating Metrics

**4400 rpm**

Rotation Speed

**160 W**

Power Consumption

**3 °**

Point Angle

### Physical Dimensions

Attribute	Value
Diameter Capacity	4-14 mm
Dimensions	35 x 25 x 25 cm
Net Weight	14 kg
Voltage	220 V

## Equipment & Compatibility



Dedicated cutting face grinding shelf ensures accurate geometry for various flute counts.

### Grinding Wheel Compatibility

SDC (Carbide - Standard) • CBN (HSS - Optional)

### Included Collets

- 4
- 6
- 8
- 10
- 12
- 14