

Portable Diesel Steam Washer for Car Detailing

This portable diesel steam washer delivers continuous steam for efficient cleaning. Its compact design ensures easy maneuverability and flexible operation for various cleaning tasks.



ADDITIONAL IMAGES



Overview



Compact and mobile diesel-heated steam cleaners designed for professional detailing.

Professional Diesel-Powered Steam Cleaning

This portable steam washer is designed for high-performance car detailing and industrial cleaning, utilizing a diesel heating system for continuous steam production. It features a compact, mobile design with flexible DC/AC power options, making it ideal for both stationary and mobile service providers. The unit is engineered for energy and water efficiency while maintaining strong pressure for effective grease and grime removal.

Performance Metrics

Key Performance Metrics

17 BAR

Steam Pressure

45 L/H

Max Water Consumption

195

Max Steam Temperature

Technical Specifications

Model Comparison

Feature	CW-DS17A	CW-DS17C
Steam Water Consumption	18-45 L/H	18-45 L/H
Steam Pressure	17 BAR	17 BAR
Steam Temperature	155-195	155-195
Water Tank Capacity	42 L	42 L

Key Features

Advanced Features

- Adjustable steam dry humidity for versatile cleaning
- Stainless steel fuel heating system for long service life
- Self-checking status with fault prompt function
- Brushless DC motor for stable and reliable operation
- Low fuel consumption and low noise output
- Manual or automatic water filling options

Safety & Protection

Integrated Protection Systems

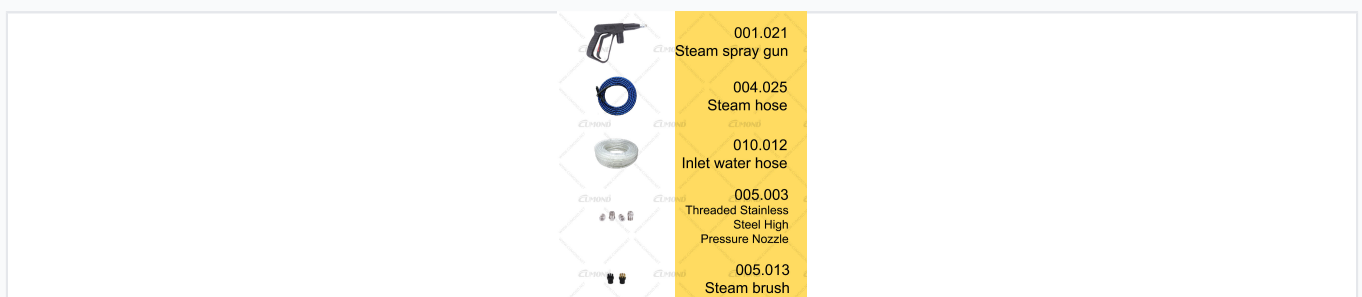
Oil Protection, Water Protection, Over Temperature Protection, Over Pressure Protection, Flame Protection

Applications

Primary Applications

- Mobile car washing (Interior, Exterior, Engine)
- Industrial equipment and mechanical parts degreasing
- Precision maintenance workshop cleaning
- Livestock breeding facility sanitation
- Kitchen fume and urban sanitation cleaning
- Fitness equipment and venue maintenance

Standard Accessories

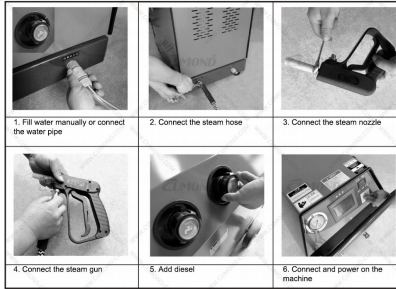


Standard accessories including steam guns, hoses, and specialized nozzles.

Included Accessories

Steam Spray Gun • Steam Hose • Inlet Water Hose • Stainless Steel High Pressure Nozzle • Steam Brush

Operation



Simple connection points for water, diesel, and steam output components.

Control & Interface

- Touch screen control interface
- Analog pressure gauge monitoring
- Digital voltage display
- DC Total Stop AC switch