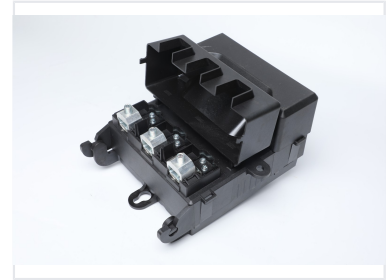
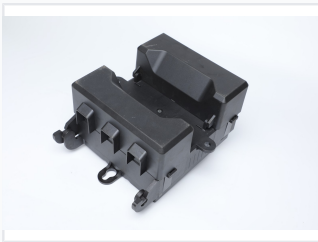


Pole Mount Fuse Switch

This pole mount fuse switch is a low-voltage, fuse-type switch suitable for both indoor and outdoor use. It is operated with an insulated rod, similar to traditional high-voltage drop switches.



ADDITIONAL IMAGES



Product Overview

JFS1-400 Pole Mount Fuse Switch

The JFS1-400 is a versatile low-voltage fuse-type switch engineered for both indoor and outdoor electrical applications. Designed for reliability, it features a robust construction comprising a base, contacts, and a protective cover. Its operation mimics traditional high-voltage drop switches, allowing for safe and convenient control via an insulated rod when installed outdoors.

Technical Specifications

Rated Current

400 A

Rated Current

Installation Environment

Indoor, Outdoor

Design & Construction

Key Design Features

- Durable housing for environmental protection
- Integrated ventilation slots for heat dissipation
- Secure mounting points including tabs and keyhole slots
- Compatible with insulated rod operation

Component Breakdown

Component	Function
Base	Structural support
Contacts	Electrical connection
Protective Cover	Safety and insulation