

Pocket-Sized Thermal Camera for Electrical and Building Inspections

This pocket-sized thermal camera is designed for electrical equipment maintenance and building inspection, allowing for fast detection of potential problems. It features a 3.5-inch LCD touchscreen for simple operation and supports picture-in-picture and smooth zoom.



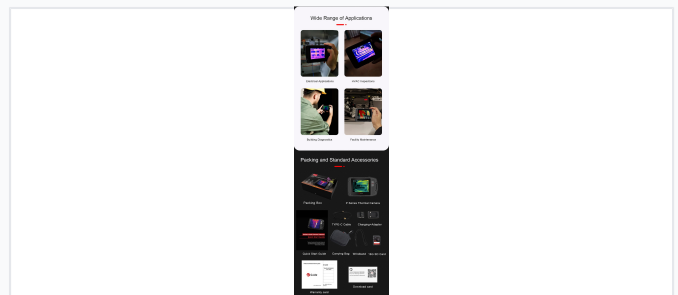
ADDITIONAL IMAGES



Overview



User-friendly touchscreen interface designed for easy operation.

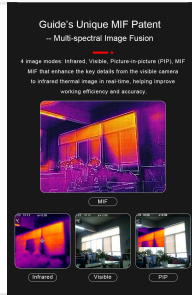


Includes essential accessories: Type-C cable, carrying bag, and 16G SD card.

Professional Pocket-Sized Thermal Inspection

This compact thermal camera is designed for rapid electrical equipment maintenance and building inspections. Featuring a 3.5-inch LCD touchscreen and an intuitive, smartphone-like interface, it allows for fast detection of potential problems without the need for extensive training. The device supports Wi-Fi connectivity, cloud services, and real-time report generation, making it an essential tool for on-the-go diagnostics.

Imaging Performance



Advanced image modes including Multi-spectral Image Fusion (MIF) for enhanced detail.

Imaging Specifications

Feature	Specification
IR Resolution	120 x 90
Pixel Pitch	17 μ m
Focal Length	2.28mm
Field of View	50° x 38°
Focus	Focus-free

Image Modes

Infrared, Visible, Picture-in-picture, Multi-spectral Image Fusion (MIF)

Measurement

Temperature Metrics

0.06 °C

Thermal Sensitivity

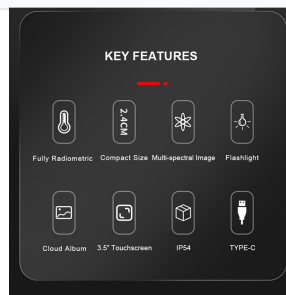
400 °C

Max Temperature

Measurement Range

-20°C to 150°C, 100°C to 400°C (Auto switching)

Physical & Environmental



Key technical features including environmental protection and connectivity.

Durability Ratings

IP54 Encapsulation • 1-meter drop test • Waterproof • Dust resistant

Dimensions

133mm x 87mm x 24mm

Weight

240 g

Connectivity & Power



Certified rugged design and cloud-based remote teamwork capabilities.

Connectivity

- Wi-Fi enabled
- Cloud service support
- Type-C connector
- Mobile App compatibility

Battery Life

2 hours