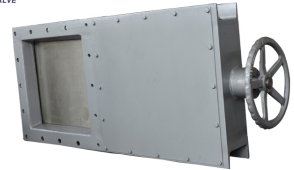


Pneumatic Square Port Knife Gate Valve

This knife gate valve features a square port design for maximizing flow capacity. The valve is pneumatically operated, allowing for remote control and automation in industrial applications.



ADDITIONAL IMAGES



Product Overview

Industrial Square Port Knife Gate Valve

This pneumatic square knife gate valve is designed for efficient flow control in demanding industrial environments. Featuring a square board opening and closing element, it offers reliable shut-off capabilities for powders, grains, and small particle materials. Its robust construction makes it suitable for heavy-duty applications in mining, chemical processing, and metallurgical sectors.

Technical Specifications

Operating Temperature

| | |
|-------------------------|---------------------------|
| 0 °C Min Temp | 120 °C Max Temp |
|-------------------------|---------------------------|

Size Range DN200xDN200 to DN1200xDN1200

Pressure Ratings Class 150, PN6, PN10

Design & Materials

Material Composition

| Component | Material Options |
|-----------|-------------------------------|
| Body | Carbon Steel, Stainless Steel |
| Disc | Stainless Steel, Carbon Steel |
| Sealing | Rubber, Metal |

Connection Type Square flange

Stem Type Rising stem tight model

Operational Details

Operating Mode

Pneumatic

Primary Applications

- Power generation
- Hydraulic systems
- Petroleum
- Chemical processing
- Mining
- Metallurgical
- Building materials
- Food processing

Commercial Information

| | |
|---------------|------------------|
| Model | FRZ641H |
| Price Range | 200-3000 USD/set |
| Delivery Time | 30 days |