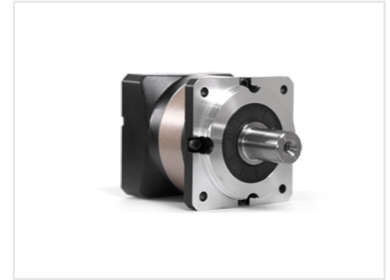


# Planetary Gearbox

This planetary gearbox provides extremely high precision gearing and powerful stability. It features high efficiency and low noise control with a long constant operation service lifetime.



## Overview

### High-Precision Planetary Gearbox

The KPLF series planetary gearbox is engineered for demanding motion control applications requiring high precision and low backlash. Utilizing alloy forged steel and advanced helical gear design, this unit offers exceptional torque density and smooth operation. Its integrated caged planetary carrier and output shaft ensure high rigidity, making it an ideal choice for servo and stepper motor integration in industrial automation and robotics.

## Construction & Materials

Material Composition	Alloy forged steel
Bearing Type	Full needle roller bearings

## Design Features

Key Design Features	Helical Gear Design, High Rigidity, Integrated Planetary Carrier, Low Backlash
---------------------	--

## Performance

### Ideal Applications

- Servo Motors
- Stepper Motors
- Industrial Automation
- Robotics