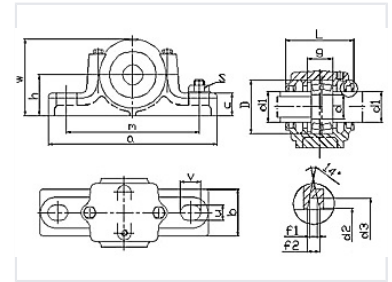


Pillow Block Bearing Unit SN200

This pillow block bearing unit is designed for robust performance in machinery and industrial applications. It features a split housing for easy maintenance and includes a lubrication fitting to ensure proper bearing lubrication.



Overview

Robust Industrial Support

The SN200 is a high-performance pillow block bearing unit engineered for demanding industrial machinery. Featuring a specialized split housing design, it facilitates streamlined installation and maintenance, allowing for quick inspection or replacement of internal components without requiring a full system dismantle. This unit ensures consistent rotational accuracy and extended operational lifespan through its integrated lubrication fitting system.

Design Features

Housing Configuration	Split Housing, Pillow Block, Lubrication Port
------------------------------	---

Performance

Maintenance Capability	Simplified bearing inspection and replacement via split-housing architecture
-------------------------------	--

Technical Dimensions

Available Measurement Parameters

- d (Shaft Diameter)
- d1, d2, d3
- L (Total Length)
- h (Center Height)
- W (Width)
- a, q, m
- V
- f1, f2, g