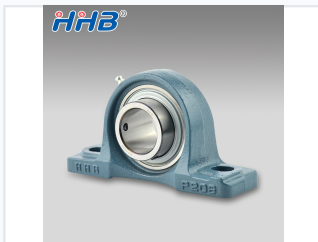


# Pillow Block Bearing Unit

Pillow block bearing units provide support for rotating shafts. The bearing housing contains a bearing and is connected to a base for secure mounting.



## ADDITIONAL IMAGES



## Overview

### High-Performance UCP Series Pillow Blocks

The UCP series pillow block bearing units are robust, ready-to-mount assemblies designed to provide reliable rotational support where the mounting surface is parallel to the shaft axis. Featuring a self-aligning design and durable cast iron housing, these units are ideal for demanding industrial environments including conveyor systems and agricultural machinery. Each unit is pre-lubricated and equipped with advanced sealing options to ensure a long service life and protection against contamination.

## Material Specifications

### Steel Ball Grade

G10

### Bearing Material

Chrome Steel (GCR15)

### Housing Material

HT200 Cast Iron

## Technical Performance

### Performance Metrics

**60 HRC**

Min Hardness

**63 HRC**

Max Hardness

### Bearing & Housing Coordination

H7, J7, K7

## Design & Options

### Available Seal Types

- Black seal
- Star seal
- Double seal
- Triple lips seal
- F seal

### Size Standards

- Metric Sizes
- Inch Sizes

### Housing Colors

Green, Grey, Blue, Black

## Manufacturing & Quality

### Production Workflow

- Steel pipe cutting
- Lathe processing
- Heat treatment
- Polishing and Grinding
- Assembly and Inspection

### Quality Control Process

- Rotary testing
- Noise inspection
- Appearance inspection
- Greasing and Rust prevention

## Logistics

### Standard Packaging

Plastic Bag + Single color box + Carton + Pallet