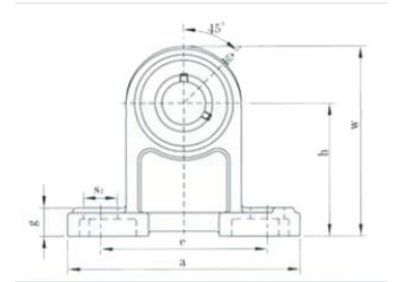


Pillow Block Ball Bearing Unit with Cast Iron Housing

This pillow block ball bearing unit is designed for mounting on surfaces parallel to the shaft axis. The cast iron housing includes a grease fitting for relubrication and the bearing insert allows for slight shaft misalignment.



Overview

Pillow Block Ball Bearing Unit (UCPH200 Series)

This UCPH200 series pillow block ball bearing unit features a robust cast iron housing designed for reliable performance in industrial machinery. The unit utilizes a self-aligning ball bearing insert, which accommodates slight shaft misalignments during operation. Equipped with an integrated grease fitting, the unit allows for easy relubrication, ensuring extended service life and consistent maintenance efficiency.

Design & Construction

Housing Material	Cast Iron
Bearing Type	Self-aligning ball bearing
Maintenance Features	Grease fitting included, 45-degree angle fitting, Relubrication capable

Technical Dimensions

Key Dimensions

- Overall length (a)
- Base length (e)
- Base width (s1)
- Height to shaft center (h)
- Overall height (w)
- Base thickness (se)