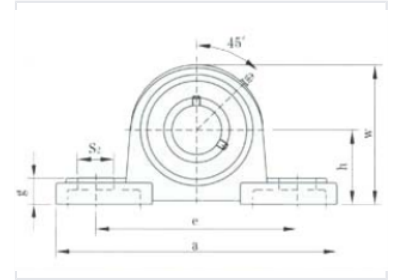


Pillow Block Ball Bearing Unit

This pillow block ball bearing unit is designed for mounting on surfaces parallel to the shaft axis. It features a cast iron housing with a grease fitting and a self-aligning ball bearing insert, accommodating misalignment between shaft and housing.



Product Overview

UCPX00 Series Pillow Block Bearing

The UCPX00 series pillow block ball bearing unit is engineered for reliable shaft support in industrial applications where surfaces are parallel to the shaft axis. Featuring a robust cast iron housing, this unit includes an integrated grease fitting for easy relubrication, ensuring long-term performance. The self-aligning ball bearing insert accommodates potential misalignment between the shaft and housing, making it a versatile solution for various mechanical systems.

Technical Specifications

Housing Material	Cast Iron
Bearing Type	Self-aligning Ball Bearing
Maintenance Features	Grease fitting included, Relubricatable

Dimensional Data

Dimensional Parameters

- Overall length (a)
- Base length (e)
- Base width (S2)
- Height to shaft center (h)
- Overall height (w)
- Base thickness (sa)