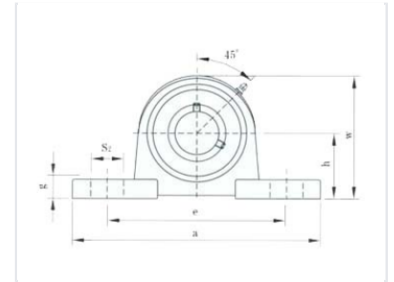


Pillow Block Ball Bearing Unit

This pillow block ball bearing unit is designed for mounting on surfaces parallel to the shaft axis. It features a robust housing and a sealed bearing insert, pre-lubricated for reliable performance.



Product Overview

Industrial Pillow Block Bearing Unit

This pillow block ball bearing unit is engineered for reliable support of rotating shafts in various industrial applications. Designed for mounting on surfaces parallel to the shaft axis, it features a robust housing and a pre-lubricated bearing insert. The unit is built to withstand moderate to heavy loads, offering easy installation and maintenance with an integrated grease fitting for convenient relubrication.

Technical Specifications

| | |
|----------------------|------------------------------------|
| Housing Material | Cast iron or pressed steel |
| Lubrication | Pre-lubricated with grease fitting |
| Mounting Orientation | Parallel to shaft axis |

Key Features

| | |
|--------------|--|
| Key Benefits | Reduced Friction, Easy Installation, Relubricatable, Shaft Locking |
|--------------|--|