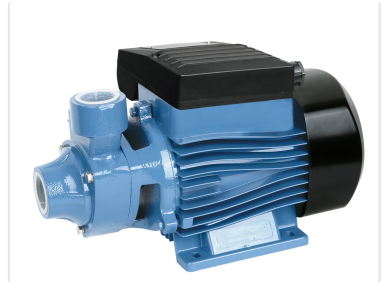


# Peripheral Water Pump for Clean Water Transfer

This peripheral pump is designed for domestic and light industrial applications. It is suitable for transferring clean water and boosting water pressure in residential systems.



## Product Overview

### Clean Water Transfer Solution

The peripheral pump is designed for reliable and efficient transfer of clean water without abrasive particles. It is ideal for domestic and light industrial applications, including residential water supply and garden irrigation. Featuring a robust cast iron body and brass impeller, this pump ensures durability and is protected against overheating.

## Technical Specifications

### Installation Requirements

- Install in closed places
- Protected against inclement weather
- Suitable for small pressure sets

### Construction Materials

Cast Iron Pump Body, Brass Impeller

## Performance Features

### Safety Features

Thermally Protected Motor

### Primary Applications

- Domestic water distribution
- Garden irrigation
- Small pressure sets
- Light industrial water transfer