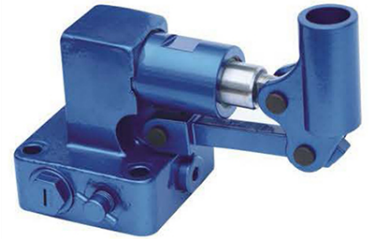


Parking Brake Hydraulic Pump

This power brake valve system ensures high operational safety with minimal force, making it suitable for various mobile machinery. It is designed for use in construction equipment, material handling vehicles, and forestry and agricultural machines.



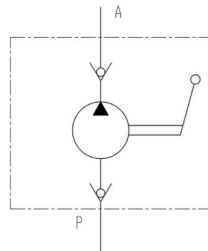
Overview

High-Performance Hydraulic Brake System

This hydraulic parking brake pump is engineered to provide high operational safety with low operating force, making it an ideal choice for heavy-duty applications. Designed for construction equipment, material handling vehicles, and forestry machinery, it ensures reliable engagement and disengagement of the parking brake system. The unit features a robust, compact design for easy integration and consistent performance under demanding environmental conditions.

Technical Specifications

© Hydraulic system schematic



Hydraulic system schematic showing internal check valves and port configurations.

Maximum Pressure

31.5 MPa
Max Pressure

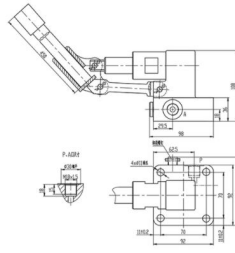
Displacement	20 ml/time
Weight	4 Kg

Operating Conditions

Viscosity Range	10-380 mm ² /s
Operating Temperature	-20°C to 100°C
Oil Cleanliness Standards	GB/T 14039-2002 19/16, NAS 1638 10

Dimensions

© Contour Connection Size



Technical drawing detailing dimensions and mounting interface for the PDF14-00 pump.

Key Dimensions

Dimension	Value
Overall Length	450 mm
Height	108 mm

Applications

Suitable Machinery

- Construction equipment
- Material handling vehicles
- Forestry machines
- Agricultural machines
- Earth-moving scrapers