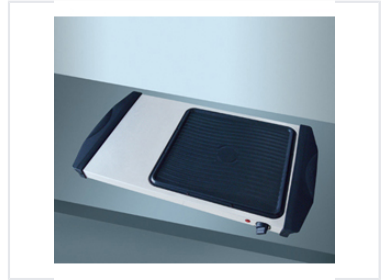


# Non-Stick Electric Griddle with Adjustable Temperature

This electric griddle features a durable non-stick cooking surface, providing even heat distribution for consistent cooking results. The adjustable temperature control allows for precise cooking of various foods, and its compact design makes it a convenient addition to any kitchen.



## Product Overview

### Versatile Cooking Performance

This electric griddle features a durable non-stick cooking surface designed for even heat distribution and consistent culinary results. The adjustable temperature control provides the precision needed for a wide variety of foods, ranging from delicate pancakes to savory grilled meats. With its compact design, integrated handles, and removable drip tray, this appliance combines convenience with healthier cooking options.

## Key Features

### Key Features

- Durable non-stick cooking surface
- Adjustable temperature control
- Integrated safety handles
- Removable drip tray
- Compact, portable design

## Usage & Applications

### Best For

Small Kitchens, Dorm Rooms, Camping Trips, Breakfast Cooking, Grilled Meats

## Maintenance

### Cleaning & Maintenance

Features an easy-to-clean non-stick surface and a removable drip tray to collect excess grease for simple cleanup.