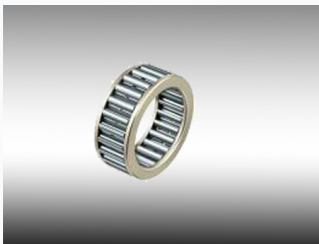


Needle Roller Bearing for High Load Applications

This needle roller bearing is designed for high load capacity and reduced friction in rotating applications. Its compact design allows for installation in space-constrained environments.



ADDITIONAL IMAGES



Product Overview

High-Performance Needle Roller Bearings

These needle roller bearings are engineered for applications demanding high load capacity within compact radial spaces. By utilizing a full complement of cylindrical rollers with a small diameter-to-length ratio, they provide a large contact area that effectively distributes loads and minimizes friction. Constructed with hardened steel races and rollers, these bearings ensure durability and reliable performance in demanding industrial environments such as transmissions and engines.

Available Series

HK, BK, HK 2RS, BK RS TA, TLA, SCE, BCE, NK, RNA, NKS, NKI, NA

Technical Specifications

Dimensional Data

Designation	Shaft Dia (mm)	Outer Dia (mm)	Width (mm)	Dynamic Load (N)
HK0408TN	4	8	8	1540
HK0509	5	9	9	2200
HK0608	6	10	8	1830
HK0810	8	12	10	3700
HK0910	9	13	10	4050

Performance Metrics

Limiting Speeds

40000 rpm

HK0408TN

36000 rpm

HK0509

32000 rpm

HK0608

21000 rpm

HK0810