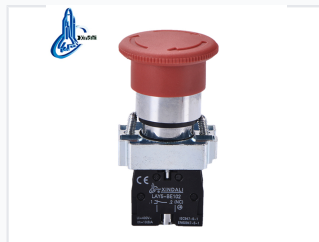
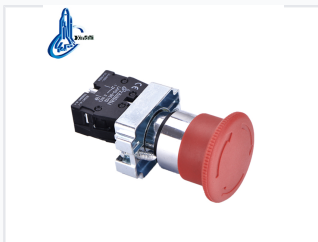


# Mushroom Head Emergency Stop Button with Release Lock

This emergency stop button features a mushroom-shaped actuator for easy activation. It includes a release lock mechanism to prevent accidental resets and ensure operator safety.



## ADDITIONAL IMAGES



## Product Overview

### Industrial Emergency Stop Solution

This mushroom-head emergency stop button is engineered for critical safety applications in industrial environments. Featuring a robust release lock mechanism, it ensures reliable shutdown and prevents accidental reactivation of machinery. Designed to meet stringent international safety standards, this unit provides a durable, high-visibility control interface for power stations, distribution cabinets, and automated control systems.

## Technical Specifications

### Mechanical Life

**1000000 cycles**  
Pushbutton

**500000 cycles**  
Selector Switch

### Electrical Life

**5000000 cycles**  
Pushbutton

**250000 cycles**  
Selector Switch

Rated Insulation Voltage	600 V
Conventional Heating Current	10 A
Insulation Resistance	e5M©
Contact Resistance	d2n©
Withstand Voltage	AC 2.5KV/min

## Compliance & Standards

### Standards Compliance

- GB/T14048.1
- IEC60947-5-1
- EN60947-5-1

### Certifications

CE, ISO 9001, RoHS, UL

## Dimensions & Mounting



Dimensional drawing showing mounting hole size, head diameter, and panel thickness requirements.

### Mounting Specifications

Parameter	Value
Mushroom Head Diameter	40mm
Mounting Hole	M22
Overall Height	43mm
Max Panel Thickness	7mm