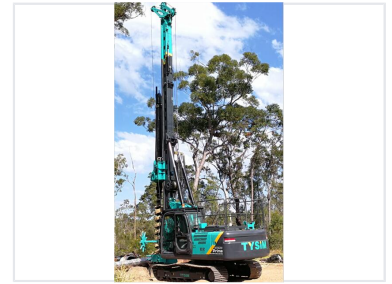


# Multifunctional Piling Rig for Rock Drilling

This multifunctional piling rig is designed for rock drilling and piling operations. The engineering drill features advanced control systems, a robust mast, and a crawler chassis for stability and precise performance on various terrains.



## Overview

### High-Performance CFA Rotary Drilling Rig

This multifunctional piling rig is engineered for efficient rock drilling and foundation construction. It features a high-performance hydraulic system developed in collaboration with leading technical institutes, ensuring smooth torque output and real-time monitoring. Designed with advanced mast verticality technology and precise measurement systems, this rig delivers superior drilling accuracy while maintaining strict adherence to European safety standards.

## Performance & Technology

### Key Drilling Capabilities

- Full hydraulic driving head for stable and smooth torque output
- Adjustable torque settings to optimize construction costs
- Mast automatic verticality technology for high hole accuracy
- Innovative drilling depth measurement system
- Concrete volume display for accurate construction measurement

### Hydraulic Performance

**100 %**  
System Efficiency

## Safety & Design

### Operational Features

- Rapid transition from transport to working state
- Luminous hot wheel design for safe night operations
- Two-stage operating interface for convenient control
- Optimized chassis back design for increased storage space

### Compliance & Safety

EN791 Compliant, Dynamic Stability Certified, Static Stability Certified