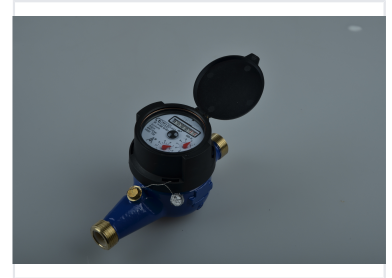


# Multi Jet Vane Wheel Water Meter

This multi-jet dry type vane wheel water meter is designed for accurate measurement of cold potable water consumption. It features a direct reading register and a copper seal for tamper resistance.



## Product Overview

### Precision Water Measurement

This multi-jet vane wheel water meter is engineered for accurate cold water consumption measurement in residential and light commercial settings. It features a robust copper-can sealed dry register with IP68 protection, ensuring durability and tamper resistance in diverse environments. The compact design and 360° rotatable register allow for flexible installation and easy reading, while the magnetic drive mechanism includes integrated anti-magnetic protection for long-term reliability.

## Key Features

### Core Features

- Compact design
- Copper-can sealed dry register
- IP68 protection rating
- 360° rotatable register
- Magnetic drive with anti-magnetic protection
- External regulating device

## Performance Metrics

### Operating Limits

**50**

Max Water Temperature

**1.6 MPa**

Max Water Pressure

**16 bar**

Max Pressure (Bars)

### Maximum Permissible Error

Range	Tolerance
Q1 to <Q2	±5%
Q2 to Q4	±2%

## Compliance & Standards

### Certifications

2014/32/EU, EN14154+A1+A2, OIML R-49: 2013(E)

## Technical Specifications

### Optional Add-ons

Non-return Valve • Reed Switch

### Available Sizes

15mm - 20mm