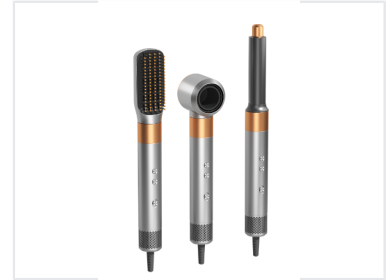


# Multi-Attachment Hair Styler Set

This versatile hair styling tool set includes multiple attachments for various styling needs. It allows users to create a range of hairstyles, from smooth and straight to voluminous curls.



## Product Overview

### Professional Styling Versatility

This multi-attachment hair styler set is designed to provide professional-grade styling results with ease. Featuring a modular design, it allows users to quickly switch between a smoothing brush, a round volumizing brush, and a curling barrel to achieve diverse hairstyles. Engineered for convenience, the device includes adjustable heat and speed settings to cater to various hair types and styling preferences.

## Technical Specifications

### Control Interface

- Multiple heat settings
- Multiple speed settings
- Integrated handle control buttons

### Included Attachments

Smoothing Brush, Round Volumizing Brush, Curling Barrel

## Design & Build

### Attachment Mechanism

Magnetic or clip-on system

### Air Intake

Mesh-covered base intake