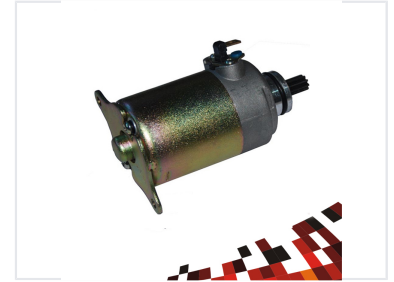


# Motorcycle Starter Motor

This starter motor is designed for motorcycle engines, providing reliable power. It features durable components for efficient and consistent engine starts.



## Product Overview

### High-Performance Starting Power

This high-performance starter motor is engineered specifically for motorcycle engines, providing reliable and consistent starting power. Built to withstand demanding applications, it features a robust armature, high-quality brushes, and durable housing designed for an extended service life. This unit ensures quick and efficient engine starts, directly contributing to enhanced overall motorcycle performance and reliability.

## Technical Specifications

### Key Components

- Robust armature
- High-quality brushes
- Durable housing

### Application

Motorcycle Engine

### Performance Benefits

Reliable starting, Quick start, Efficient operation, Extended service life