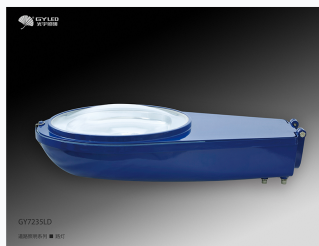
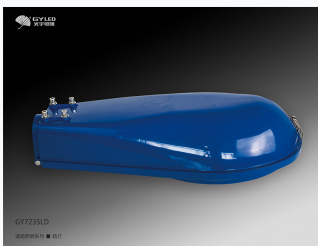


Motorcycle Spark Plug

This spark plug is designed for motorcycle engines. It features various types such as platinum, iridium, resistor, gas, v-grooved, pointed, multi-electrode, and standard electrode.



ADDITIONAL IMAGES



Product Overview

High-Performance Motorcycle Spark Plugs

These high-performance spark plugs are engineered for reliability and extended engine service life. Featuring advanced electrode designs, they provide optimal combustion efficiency, which helps improve fuel economy and reduce emissions. Designed to withstand high temperatures and pressures, these plugs are suitable for a wide range of motorcycle models.

Technical Specifications

Model Compatibility Examples

- E8TC
- E6TC
- D8TC
- A.TC

Available Types

Platinum, Iridium, Resistor, Gas, V-grooved, Pointed, Multi-electrode, Standard electrode

Commercial Terms

Quality Grade

Customizable based on buyer requirements

Delivery

On-time delivery guaranteed