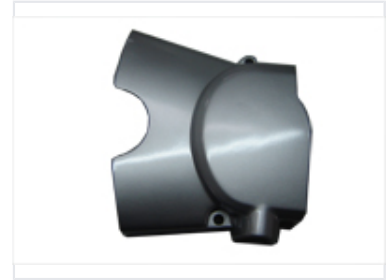


Motorcycle Engine Side Cover

This motorcycle engine side cover is crafted from cast aluminum or durable plastic composite. It shields the engine's internal parts from external elements and potential impacts.



Product Overview

Engine Protection Solution

This motorcycle engine side cover is a critical protective component engineered to shield internal engine parts from environmental hazards such as dirt, debris, and impacts. Featuring a complex, contoured design with specific mounting points, it ensures a precise fit for engine integrity. The durable construction and smooth surface finish offer both corrosion resistance and aesthetic appeal for high-performance maintenance.

Technical Specifications

Material Composition	Cast aluminum or durable plastic composite
Surface Finish	Coated for corrosion resistance
Key Features	Corrosion Resistant, Impact Protection, Contoured Design

Compatibility & Fitment

Mounting	Precision mounting points for specific engine models
Integration	Yes