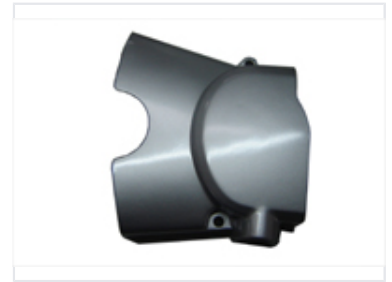


# Motorcycle Engine Side Cover

This motorcycle engine side cover protects internal engine components. It is designed to shield the engine from debris and potential damage.



## Product Overview

### Engine Protection and Aesthetic Enhancement

This motorcycle engine side cover is engineered to provide robust protection for critical internal engine components. By shielding the engine from road debris, dust, and potential impact damage, it helps maintain long-term performance and cleanliness. Its smooth, rounded design not only serves a functional purpose but also enhances the overall aesthetic profile of the motorcycle.

## Technical Details

Component Type	Engine Side Cover
Mounting	Integrated mounting points for secure attachment

## Features

### Key Benefits

- Protects internal engine components
- Shields against road debris and dust
- Enhances motorcycle aesthetics
- Secure mounting design

### Design Style

Smooth • Rounded • Protective