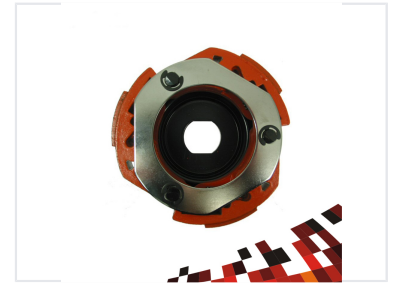


# Motorcycle Converted Belt Pulley

This converted belt pulley is designed for motorcycle drive systems. It is constructed from durable materials to withstand high stresses and temperatures.



## Product Overview

### High-Performance Belt Pulley System

This motorcycle converted belt pulley is engineered to deliver steady tensile force and consistent power transmission. Constructed with high-quality chloroprene rubber and gumming polyester, the component is processed using advanced manufacturing techniques to ensure durability and a long working lifetime. It is a reliable solution designed to withstand demanding riding conditions while maintaining optimal drive efficiency.

## Technical Specifications

### Compliance

National Standard

### Key Performance Features

- Steady tensile force
- Steady drive performance
- High power transmission efficiency
- Extended working lifetime

### Material Composition

Chloroprene Rubber, Gumming Polyester

## Ordering Information

### Sample Orders

Yes