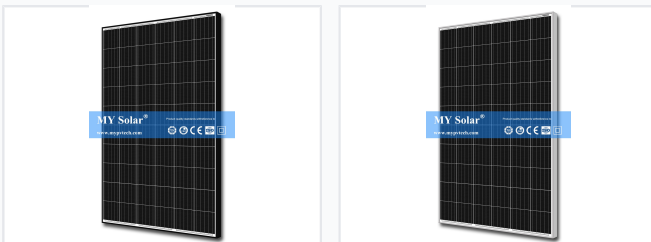


Monocrystalline Solar Panel 315W-335W

This monocrystalline solar panel utilizes 5/6/9 busbar solar cell technology to improve module efficiency. The passivated emitter rear contact (PERC) technology enhances module conversion efficiency up to 20.08%.



ADDITIONAL IMAGES



Overview



Versatile application examples and flexible global delivery options.

High-Efficiency Monocrystalline Solar Module

This high-efficiency monocrystalline solar panel, available in power outputs from 315W to 335W, is designed for optimal energy conversion in both residential and commercial applications. Utilizing advanced Passivated Emitter Rear Contact (PERC) technology and a 5/6/9 busbar design, it offers superior module efficiency of up to 20.08%. Built for durability, the panel features an anodized aluminum alloy frame and tempered glass, ensuring resilience against extreme weather conditions, including high wind and snow loads.

Key Features

PERC Technology • Anti-PID Performance • Low-light Optimized • High Efficiency • Salt Mist & Ammonia Resistant

Electrical Specifications

Electrical Performance (STC)

Model	Pmax (W)	Vmp (V)	Imp (A)	Voc (V)	Isc (A)
MYM3060-315	315	33.2	9.49	40.7	10.04
MYM3060-320	320	33.4	9.59	40.9	10.15
MYM3060-325	325	33.6	9.68	41.1	10.2
MYM3060-330	330	33.8	9.77	41.3	10.31
MYM3060-335	335	34	9.87	41.5	10.36

System Limits

1500 VDC

Max System Voltage

20 A

Max Series Fuse

-40 °C

Min Operating Temp

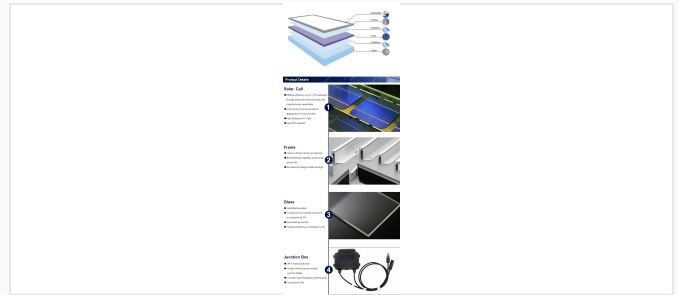
85 °C

Max Operating Temp

Mechanical Characteristics



Detailed engineering specifications, dimensions, and electrical performance curves.



Robust construction details including anti-reflective glass and IP67 waterproof junction box.

Physical Specifications

- Dimensions: 1666 x 1000 x 35 mm
- Weight: 19.0 kg
- Cell Type: Mono PERC 158.75 x 158.75 mm
- Cell Configuration: 60 Cells (6x10)
- Glass: 3.2mm Anti-Reflection Coated Tempered Glass
- Frame: Anodized Aluminium Alloy
- Junction Box: IP67 Rated

Load Capacity

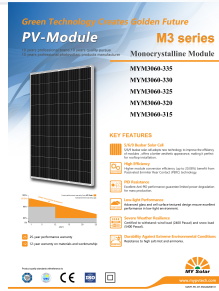
2400 Pa

Wind Load

5400 Pa

Snow Load

Certifications & Warranty



Warranty coverage and key technology highlights including PERC and busbar cell design.

Warranty

- 12-year warranty on materials and workmanship
- 25-year performance warranty

Certifications

TUV, CE, ISO, CQC