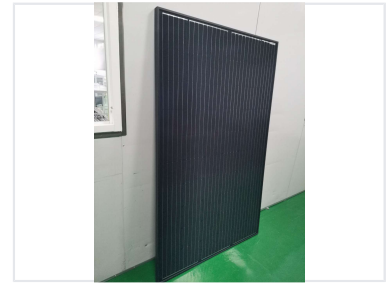


# Monocrystalline Solar Panel 300-315W

This monocrystalline solar panel is engineered for efficient home energy solutions. The full black module is available in 300W and 315W power outputs.



## ADDITIONAL IMAGES



## Product Overview

### High-Efficiency Monocrystalline Module

This high-efficiency monocrystalline solar module is designed specifically for residential installations, featuring a full black aesthetic for seamless visual integration. Available in power outputs between 300W and 315W, the unit utilizes grade A solar cells to ensure optimal performance and reliability. Engineered for longevity, the module provides a sustainable energy solution with an expected lifespan exceeding 25 years.

## Technical Specifications

### Power Output Range

**300 W**  
Min Power

**315 W**  
Max Power

Cell Configuration	60 Cells
Bus Bars	9
Expected Lifespan	25+ years

## Design & Aesthetics

Aesthetic Style  
Full Black

## Certifications & Compliance

Certifications	ISO 9001:2015, PV CYCLE, CE
----------------	-----------------------------