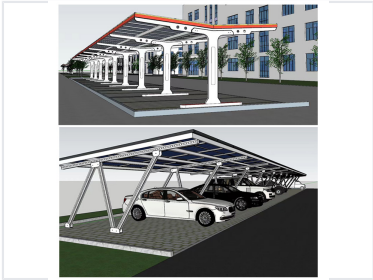
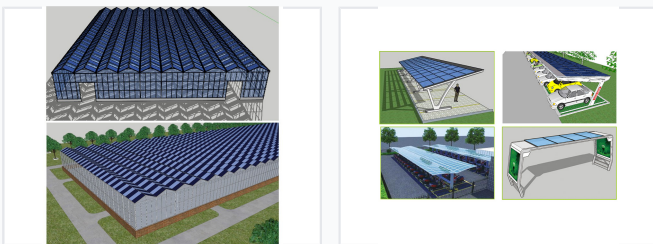


# Monocrystalline Double Glass BIPV Solar Panel with Mounting

This BIPV solar panel features monocrystalline cells and a double-glass construction for durability and thermal insulation. It is integrated with a mounting structure for seamless incorporation into building designs, providing both weather protection and solar power generation.



## ADDITIONAL IMAGES



## Product Overview

### High-Efficiency BIPV Solar Solution

This Monocrystalline Double Glass BIPV (Building Integrated Photovoltaics) solar panel is designed for seamless integration into architectural projects. Featuring advanced double-glass construction, it offers superior durability and performance compared to standard panels. Beyond energy generation, this system provides enhanced thermal insulation and weather protection, making it an ideal choice for sunshine rooms, carports, and building envelopes.

## Performance Metrics

### Power Output Increase

**25 %**

Increased Output Power

### Service Life

30 years

## Technical Specifications

### Cell Technology

Monocrystalline

### Panel Construction

Bifacial Double Glass

## Application & Integration

### Key Advantages

- Enhanced thermal insulation
- Weather protection
- Aesthetic architectural integration
- Longer 30-year lifespan

### Recommended Applications

Sunshine Rooms, Building Integration, Carports, Greenhouses